

# CHAMOT

## Recombinant Human HDGF

CM122-5HP

CM122-20HP

CM122-100HP

CM122-500HP

CM122-1000HP



CHAMOT

喬默生物技術(上海)有限公司  
CHAMOT BIOTECHNOLOGY CO., LTD.

# CONTENT

**1** 产品简介

**2** 产品组成

**3** 产品储存

**4** 产品使用

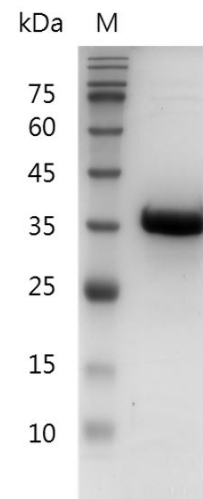
## Recombinant Human HDGF (Hepatoma-derived growth factor)

编号:	CM122-5HP CM122-20HP CM122-100HP CM122-500HP CM122-1000HP	规格:	5 µg 20 µg 100 µg 500 µg 1 mg
类别:	重组蛋白	应用:	Functional Assay

### 产品简介

**描述:** HDGF is a member of the hepatoma-derived growth factor family. HDGF plays a role as a secreted mitogen from the human hepatoma cell line Huh-7. HDGF is a nuclear targeted vascular smooth muscle cell mitogen as well as a heparin-binding protein that is greatly expressed in tumor cells where it stimulates proliferation. HDGF has several biochemical functions, for example , DNA binding, RNA polymerase II transcription corepressor activity, growth factor activity. Some of the functions are cooperated with other proteins, some of the functions could acted by HDGF itself.

**来源:** *Escherichia coli*  
**纯度:** >98% as determined by SDS-PAGE. Ni-NTA chromatography.  
**内毒素检测:** <0.1 EU per 1 µg of the protein by the LAL method.



SDS- PAGE analysis of recombinant human HDGF

蛋白序列: MSRSNRQKEYKCGDLVFAKMKGYPH  
 WPARIDEMPEAAVKSTANKYQVFFFG  
 THETAFLGPKDLFPYEEESKEKFGKPNK  
 RKGfSEGLWEIENNPTVKASGYQSSQ  
 KKSCVEEPEPEPEAAEGDGDKKGNAE  
 GSSDEEGKLVIDEPAKEKNEKGALKRR  
 AGDLLEDSPKRPKEAENPEGEEKEAAT  
 LEVERPLPMEVEKNSTPSEPGSGRGPP  
 QEEEEEEDEEEEATKEDAEAPGIRDHE  
 SL with polyhistidine tag at the C-terminus

## 产品组成

成分: 从含有 1X PBS, pH 7.4 溶液中冻干的蛋白质.

## 产品储存/运输

产品形式	储存温度	储存时间
冻干粉	-20°C至-80°C	自收到之日起1年
重悬液 (初始)	2°C至8°C	不超过1周
重悬液 (经稀释)	-20°C至-80°C	3到6个月

运输方式: 蓝冰

## 产品使用

- 1、开盖前, 建议3000-3500rpm离心5min。
- 2、推荐使用无菌水重悬冻干粉, 溶液浓度不低于100µg/mL, 不高于1mg/mL, 并室温静置至少20min以充分溶解。勿涡旋剧烈振荡。
- 3、重悬后的溶液, 2 -8°C无菌保存不超过1周。
- 4、如需长期保存, 推荐使用无菌的含载体蛋白 (如0.1%BSA、10%FBS 或5%HSA) 的溶液进一步稀释 (不低于10ug/mL) 后分装保存, -20°C至 -80°C无菌保存3到6个月。无血清实验需求时, 可更换为 5%海藻糖溶液作为载体。避免反复冻融。

WB= Western Blot; IP= Immunoprecipitation; IF= Immunofluorescence; IHC= Immunohistochemistry;  
 FACS= Fluorescence activated Cell Sorting; FA= Functional Assay